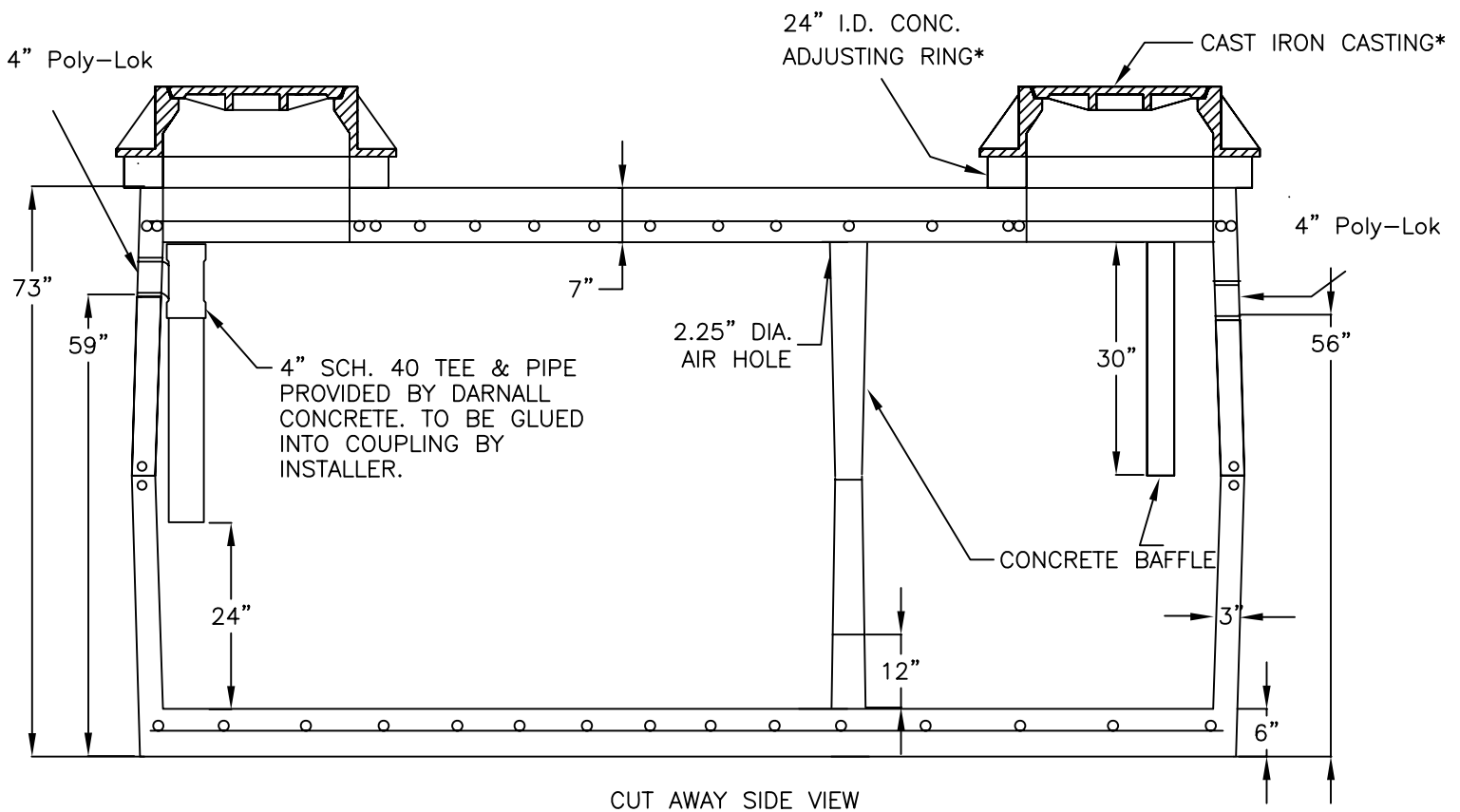
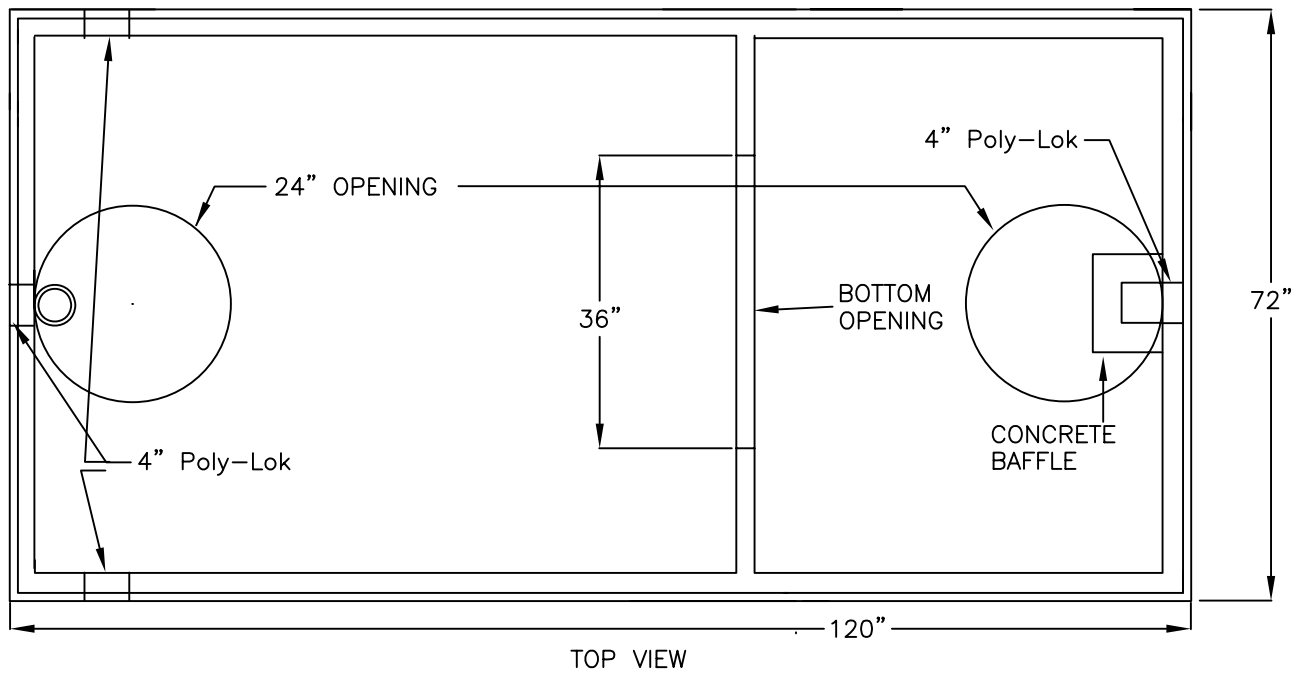


1500 Gallon HS20 Rated Grease Trap



Design Notes:

1. Design per ACI 318 and ASTM C1227 Part 6.
2. Live load = AASHTO HS-20
3.  $f'_c = 50$  KSI @ 28 days with 5.33#/C.Y. Grace Strux 90/40 fiber.
4. Unit weight of concrete = 150 PCF.
5. Earth fill: 1.0' to 8'.
6. Unit weight of soil = 120 PCF.
7. Water table = 3' below grade.
8. Reinforcing bars per ASTM A706, grade 60.

\* CASTINGS AND RISER RINGS NOT INCLUDED IN GREASE TRAP PRICE.

DARNALL CONCRETE PRODUCTS COMPANY
1500 GALLON GREASE TRAP HS20 DETAIL
DRAWING DATE: July 17, 2014